



Catalogue '24

www.semiplas.com

SP Seal 09

Plastic Pad Lock Seal



Color Options



Technical Information

- Plastic Indicative seal.
- Ideal for holes and small openings.
- Manual locking. It can be closed with one hand.
- Applicable for the airline industry (passenger transport), the cash-in-transit sector, the food industry (viscera and livers), the perishable and non-perishable goods wholesale sector, food retailers and health services (hospitals and clinics).
- Typical applications include sealing of small openings such as catering and drinks lockers in aircraft, seals for onboard sales trolleys, sealing of viscera and livers, ATM cassette seals and seals for cash boxes. Also as a substitute for any metal padlock.
- Made of Polypropylene Copolymer.
- Laser marking and thermal printing options. Barcode is available.
- Products should be stored in their own packaging, in the room temperature and away from sunlight.
- Production is made with raw material complying with ROHS requirements.

Packaging Details

Product Weight	: 1,9 gr
Box Dimension	: 24 X 48 X 14 cm
Quantity Per Box	: 1.000 pieces
Box Weight	: 2 kg
Pallet Dimensions	: Truck - 100x120x225 cm Lorry - 100x120x195 cm
Quantity Per Pallet	: Truck - 150.000 pieces Lorry - 130.000 pieces

SP Seal 04P

Adjustable Cable Seal



Color Options



Technical Information

- Indicative seal with adjustable cable.
- Ideal for land, air and maritime transport especially for valves and tanks.
- Single-piece seal composed of a high impact modified ABS body and galvanized cable.
- White and orange colors available in stock. Please contact our sales team for different colors.
- Requires a special cutter for opening.
- Name, consecutive numbering, and/or barcode with laser marking.
- Products should be stored in their own packaging, in the room temperature and away from sunlight.
- Production is made with raw material complying with ROHS requirements.

Packaging Details

Product Weight	: 17 gr
Box Dimension	: 34 X 26 X 17 cm
Quantity Per Box	: 1.000 pieces
Box Weight	: 17,5 kg
Pallet Dimensions	: Truck - 80x120x85 cm Lorry - 80x120x85 cm
Quantity Per Pallet	: Truck - 44.000 pieces Lorry - 44.000 pieces

Technical Information

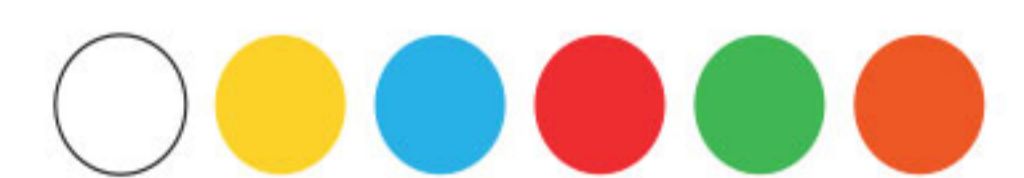
- Indicative seal with adjustable cable.
- Ideal for land, air and maritime transport especially for valves and tanks.
- Single-piece seal composed of an aluminum body and galvanized cable.
- Red and dark blue colors available in stock. Please contact our sales team for different colors.
- Requires a special cutter for opening.
- Name, consecutive numbering, and/or barcode with laser marking.
- Products should be stored in their own packaging, in the room temperature and away from sunlight.
- Production is made with raw material complying with ROHS requirements.

Packaging Details

Product Weight	: 15 gr
Box Dimension	: 26 X 53 X 14 cm
Quantity Per Box	: 1.000 pieces
Box Weight	: 15,5 kg Truck - 80x120x85 cm
Pallet Dimensions	: Lorry - 80x120x85 cm Truck - 30.000 pieces
Quantity Per Pallet	: Lorry - 30.000 pieces

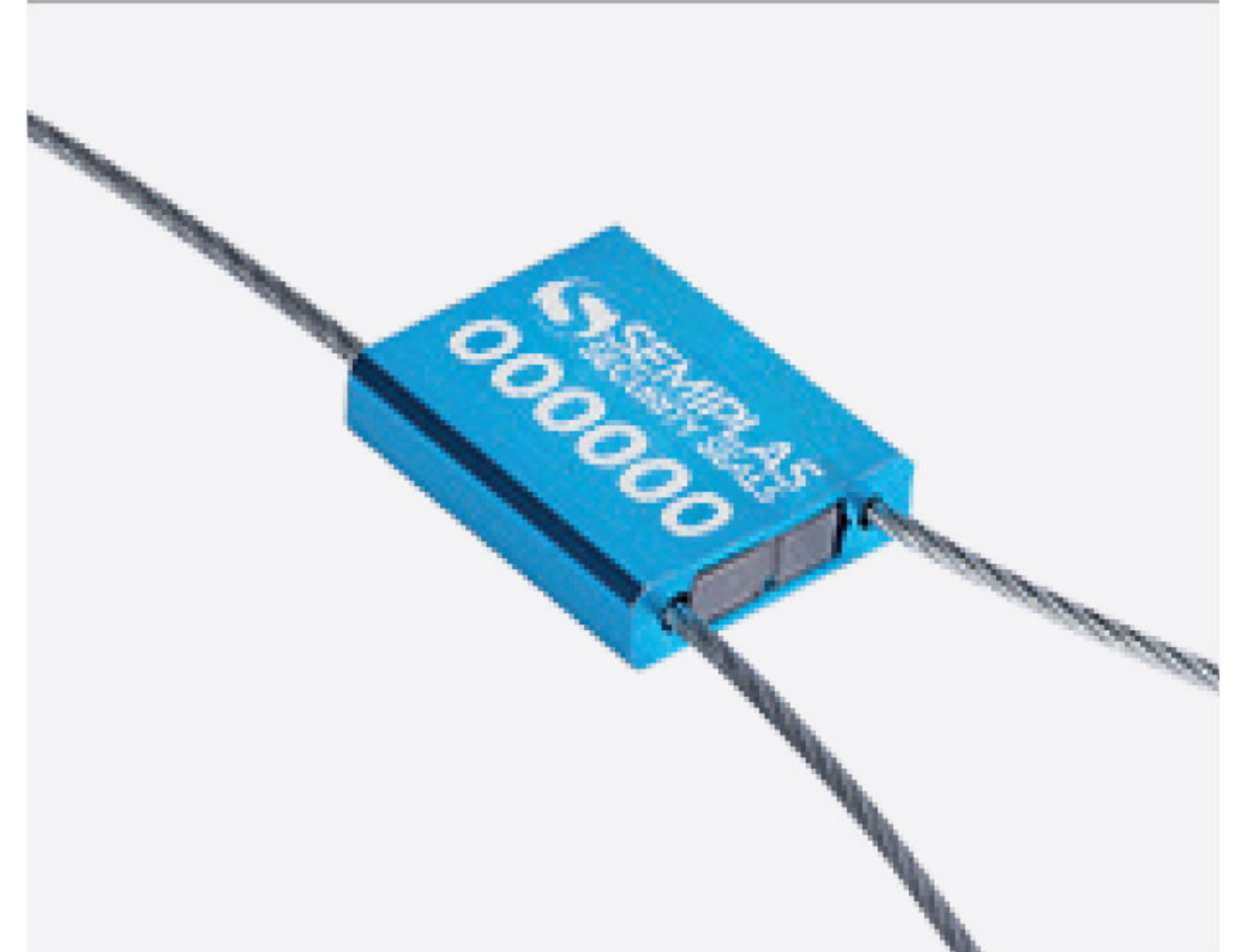


Color Options



SP Seal 04M

Adjustable Cable Seal



Technical Information

- Barrier type seal specially designed for maritime containers but also applicable on truck doors.
- Two-piece high security seal consisting of a double-grooved steel shaft and a high impact ABS colored cap with a steel core and a security ring.
- Anti-spin
- No tool required for application. Requires pliers for opening.
- Approved according to ISO/PAS 17712 standard and complies with C-TPAT regulations.
- Shaft and cap are connected for easy storage and placement.
- Can be laser marked with company name, consecutive numbering and barcode.
- Products should be stored in their own packaging, in the room temperature and away from sunlight.
- Production is made with raw material complying with ROHS requirements.

Packaging Details

Product Weight	: 62 gr
Box Dimension	: 34 X 53 X 14 cm
Quantity Per Box	: 250 pieces
Box Weight	: 16,5 kg
Pallet Dimensions	: Truck - 80x120x130 cm Lorry - 80x120x130 cm
Quantity Per Pallet	: Truck - 10.000 pieces Lorry - 10.000 pieces



Color Options



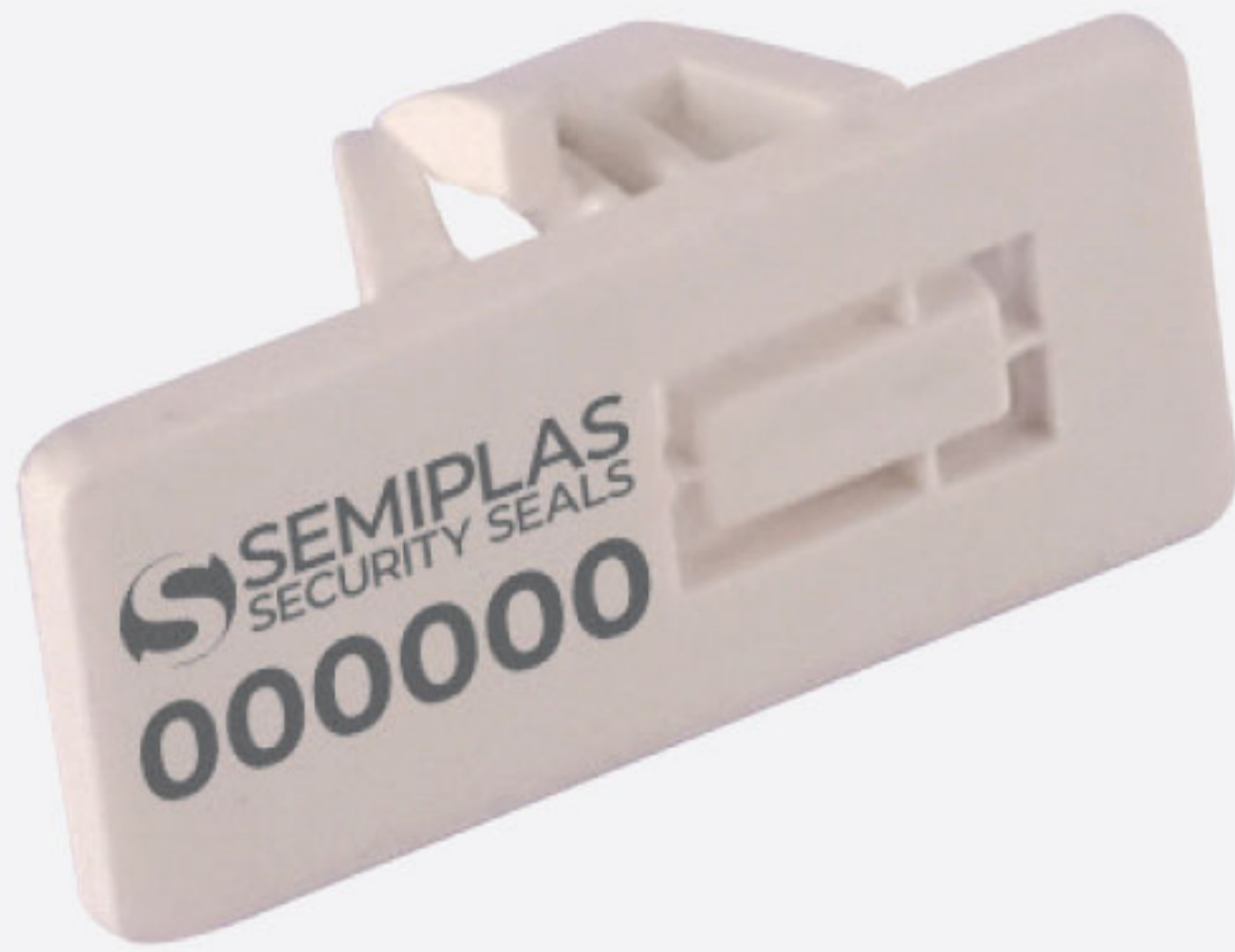
SP Seal 14

Bolt Seal

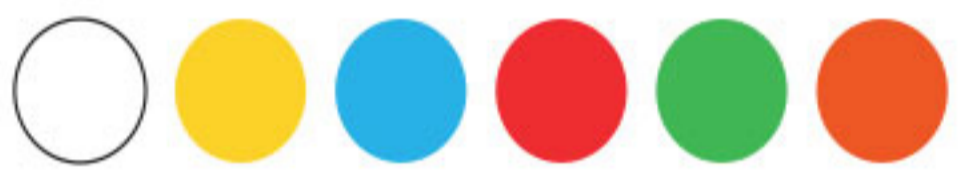


Box Seal 01

Box Seal



Color Options



Technical Information

- Clip seal specially designed for securing plastic storage boxes.
- Easy to install and remove.
- Its four anchor points provide more security.
- Pre-cut for easy opening.
- Serial numbering and customization by laser marking. Barcoding is also available.
- Applicable for the postal and/or courier sector for the classification, storage and transport of mail and other miscellaneous uses. As well as for the logistics, transport, food and retail sectors.
- Products should be stored in their own packaging, in the room temperature and away from sunlight.
- Production is made with raw material complying with ROHS requirements.

Packaging Details

Product Weight	: 1,9 gr
Box Dimension	: 24 X 48 X 14 cm
Quantity Per Box	: 1.000 pieces
Box Weight	: 2 kg
Pallet Dimensions	: Truck - 100x120x225 cm Lorry - 100x120x195 cm
Quantity Per Pallet	: Truck - 150.000 pieces Lorry - 130.000 pieces

Poly Seal

Security Pouch Seal



Color Options



Technical Information

- Special security lock seal for bags and pouches.
- Apply pressure to use.
- Easy removal by hand.
- Made of polystyrene (PS) material.
- It allows numbering and/or logo. Not enough space for barcode application.
- Thermal transfer and laser marking options.
- Products should be stored in their own packaging, in the room temperature and away from sunlight.
- Production is made with raw material complying with ROHS requirements.

Packaging Details

Product Weight	: -
Box Dimension	: 12 X 25 X 12 cm
Quantity Per Box	: 3000 pieces
Box Weight	: -
Pallet Dimensions	: Truck - 100x120x235 cm Lorry - 100x120x195 cm
Quantity Per Pallet	: Truck - 2.160.000 pieces Lorry - 1.800.000 pieces

Technical Information

- Special security lock seal for bags and pouches.
- Apply pressure to use.
- Easy removal by hand.
- Made of polystyrene (PS) material.
- It allows numbering and/or logo. Enough space for barcode application.
- Thermal transfer and laser marking options.
- Products should be stored in their own packaging, in the room temperature and away from sunlight.
- Production is made with raw material complying with ROHS requirements.

Packaging Details

Product Weight	: -
Box Dimension	: 12 X 25 X 12 cm
Quantity Per Box	: 3000 pieces
Box Weight	: -
Pallet Dimensions	: Truck - 100x120x235 cm Lorry - 100x120x195 cm
Quantity Per Pallet	: Truck - 2.160.000 pieces Lorry - 1.800.000 pieces



Color Options



Technical Information

- Special security lock seal for bags and pouches.
- Apply pressure to use.
- Easy removal by hand.
- Made of polystyrene (PS) material.
- It allows numbering and/or logo. Enough space for barcode application.
- Thermal transfer and laser marking options.
- Products should be stored in their own packaging, in the room temperature and away from sunlight.
- Production is made with raw material complying with ROHS requirements.

Packaging Details

Product Weight	: -
Box Dimension	: 12 X 25 X 12 cm
Quantity Per Box	: 3000 pieces
Box Weight	: -
Pallet Dimensions	: Truck - 100x120x235 cm Lorry - 100x120x195 cm
Quantity Per Pallet	: Truck - 2.160.000 pieces Lorry - 1.800.000 pieces



Color Options



Box Seal 2

Box Seal



Color Options



Technical Information

- Special security lock seal for plastic boxes.
- Apply pressure to use.
- Easy removal by hand.
- Made of polystyrene (PS) material.
- It allows numbering and/or logo and barcode if requested.
- Thermal transfer and laser marking options.
- Products should be stored in their own packaging, in the room temperature and away from sunlight.
- Production is made with raw material complying with ROHS requirements.

Packaging Details

Product Weight	: 1,25 gr
Box Dimension	: 31 X 41 X 16 cm
Quantity Per Box	: 2000 pieces
Box Weight	: 3 kg
Pallet Dimensions	: Truck - 110x130x240 cm Lorry - 110x130x190 cm
Quantity Per Pallet	: Truck - 280.000 pieces Lorry - 220.000 pieces

SP Seal 18

Metallic Inserted Pull Up Seal



Color Options



Technical Information

- Pull up seal with metallic insert to prevent tampering.
- Material: Polypropylene Copolymer
- Applicable for cages, big bags, chemical containers, silos, and tanker valves.
- It offers maximum security against tampering and ensures traceability of valuable goods.
- Applicable for the food, chemical, logistics and land transport sectors.
- Thermal and/or laser marking options.
- Products should be stored in their own packaging, in the room temperature and away from sunlight.
- Production is made with raw material complying with ROHS requirements.

Packaging Details

Product Weight	: 6,4 gr
Box Dimension	: 46 X 52 X 23 cm
Quantity Per Box	: 1000 pieces
Box Weight	: 7,4 kg
Pallet Dimensions	: Truck - 110x130x245 cm Lorry - 110x130x180 cm
Quantity Per Pallet	: Truck - 60.000 pieces Lorry - 54.000 pieces

Technical Information

- Pull up seal with metallic insert to prevent tampering.
- Material Polypropylene Copolymer
- Applicable for cages, big bags, chemical containers, silos, and tanker valves.
- It offers maximum security against tampering and ensures traceability of valuable goods.
- Applicable for the food, chemical, logistics and land transport sectors.
- Thermal and/or laser marking options.
- Products should be stored in their own packaging, in the room temperature and away from sunlight.
- Production is made with raw material complying with ROHS requirements.

Packaging Details

Product Weight	: 5,6 gr
Box Dimension	: 24 X 41 X 44 cm
Quantity Per Box	: 1000 pieces
Box Weight	: 6,1 kg
Pallet Dimensions	: Truck - 110x130x235 cm Lorry - 110x130x190 cm
Quantity Per Pallet	: Truck - 65.000 pieces Lorry - 52.000 pieces

Technical Information

- Pull up seal with metallic insert to prevent tampering.
- Material Polypropylene Copolymer
- Applicable for cages, big bags, chemical containers, silos, and tanker valves.
- It offers maximum security against tampering and ensures traceability of valuable goods.
- Applicable for the food, chemical, logistics and land transport sectors.
- Thermal and/or laser marking options.
- Products should be stored in their own packaging, in the room temperature and away from sunlight.
- Production is made with raw material complying with ROHS requirements.

Packaging Details

Product Weight	: 3,6 gr
Box Dimension	: 24 X 41 X 44 cm 1000
Quantity Per Box	: pieces
Box Weight	: 4,1 kg
Pallet Dimensions	: Truck - 110x130x235 cm Lorry - 110x130x190 cm
Quantity Per Pallet	: Truck - 65.000 pieces Lorry - 52.000 pieces

SP Seal 22.01

Metallic Inserted Pull Up Seal



Color Options



SP Seal 23.01

Metallic Inserted Pull Up Seal



Color Options



SP Seal 22.01T

Metallic Inserted Pull Up Seal



Color Options



Technical Information

- Pull up seal with metallic insert to prevent tampering.
- Material Polypropylene Copolymer.
- Tear off feature for easy hand removal.
- Applicable for cages, big bags, chemical containers, silos, and tanker valves.
- It offers maximum security against tampering and ensures traceability of valuable goods.
- Applicable for the food, chemical, logistics and land transport sectors.
- Thermal and/or laser marking options.
- Products should be stored in their own packaging, in the room temperature and away from sunlight.
- Production is made with raw material complying with ROHS requirements.

Packaging Details

Product Weight	: 6,2 gr
Box Dimension	: 24 X 41 X 44 cm
Quantity Per Box	: 1000 pieces
Box Weight	: 6,7 kg
Pallet Dimensions	: Truck - 110x130x235 cm Lorry - 110x130x190 cm
Quantity Per Pallet	: Truck - 65.000 pieces Lorry - 52.000 pieces

SP Seal 22.02

Metallic Inserted Seal



Color Options



Technical Information

- Pull up seal with metallic insert to prevent tampering.
- Material Polypropylene Copolymer.
- Applicable for cages, big bags, chemical containers, silos, and tanker valves.
- It offers maximum security against tampering and ensures traceability of valuable goods.
- Applicable for the food, chemical, logistics and land transport sectors.
- Thermal and/or laser marking options.
- Products should be stored in their own packaging, in the room temperature and away from sunlight.
- Production is made with raw material complying with ROHS requirements.

Packaging Details

Product Weight	: 4,4 gr
Box Dimension	: 24 X 31 X 44 cm 1000
Quantity Per Box	: pieces
Box Weight	: 5 kg
Pallet Dimensions	: Truck - 110x130x235 cm Lorry - 110x130x190 cm
Quantity Per Pallet	: Truck - 90.000 pieces Lorry - 72.000 pieces

Technical Information

- Pull up seal with metallic insert to prevent tampering.
- Material Polypropylene Copolymer.
- Applicable for cages, big bags, chemical containers, silos, and tanker valves.
- It offers maximum security against tampering and ensures traceability of valuable goods.
- Applicable for the food, chemical, logistics and land transport sectors.
- Thermal and/or laser marking options.
- Products should be stored in their own packaging, in the room temperature and away from sunlight.
- Production is made with raw material complying with ROHS requirements.

Packaging Details

Product Weight	: 3,5 gr
Box Dimension	: 24 X 31 X 44 cm
Quantity Per Box	: 1000 pieces
Box Weight	: 4 kg
Pallet Dimensions	: Truck - 110x130x235 cm Lorry - 110x130x190 cm
Quantity Per Pallet	: Truck - 90.000 pieces Lorry - 72.000 pieces



Color Options



Technical Information

- Pull up seal with metallic insert to prevent tampering.
- Material Polypropylene Copolymer.
- Applicable for cages, big bags, chemical containers, silos, and tanker valves.
- It offers maximum security against tampering and ensures traceability of valuable goods.
- Applicable for the food, chemical, logistics and land transport sectors.
- Thermal and/or laser marking options.
- Products should be stored in their own packaging, in the room temperature and away from sunlight.
- Production is made with raw material complying with ROHS requirements.

Packaging Details

Product Weight	: 6,0 gr
Box Dimension	: 26 X 44 X 44 cm
Quantity Per Box	: 1000 pieces
Box Weight	: 6,6 kg
Pallet Dimensions	: Truck - 110x130x235 cm Lorry - 110x130x190 cm
Quantity Per Pallet	: Truck - 50.000 pieces Lorry - 40.000 pieces



Color Options



SP Seal 23.02

Metallic Inserted Pull Up Seal



SP Seal 24.01

Metallic Inserted Pull Up Seal



SP Seal 24.1 W/HOLE

Metallic Inserted Pull Up Seal



Color Options



Technical Information

- Pull up seal with metallic insert to prevent tampering.
- Material Polypropylene Copolymer.
- Vertical hole on the label for excess tail.
- Applicable for cages, big bags, chemical containers, silos, and tanker valves.
- It offers maximum security against tampering and ensures traceability of valuable goods.
- Applicable for the food, chemical, logistics and land transport sectors.
- Thermal and/or laser marking options.
- Products should be stored in their own packaging, in the room temperature and away from sunlight.
- Production is made with raw material complying with ROHS requirements.

Packaging Details

Product Weight	: 6,0 gr
Box Dimension	: 26 X 44 X 44 cm
Quantity Per Box	: 1000 pieces
Box Weight	: 6,6 kg
Pallet Dimensions	: Truck - 110x130x235 cm Lorry - 110x130x190 cm
Quantity Per Pallet	: Truck - 50.000 pieces Lorry - 40.000 pieces

SP Seal 24.01T

Metallic Inserted Pull Up Seal



Color Options



Technical Information

- Pull up seal with metallic insert to prevent tampering.
- Material Polypropylene Copolymer.
- Tear off feature for easy hand removal.
- Applicable for cages, big bags, chemical containers, silos, and tanker valves.
- It offers maximum security against tampering and ensures traceability of valuable goods.
- Applicable for the food, chemical, logistics and land transport sectors.
- Thermal and/or laser marking options.
- Products should be stored in their own packaging, in the room temperature and away from sunlight.
- Production is made with raw material complying with ROHS requirements.

Packaging Details

Product Weight	: 6,6 gr
Box Dimension	: 26 X 44 X 44 cm
Quantity Per Box	: 1000 pieces
Box Weight	: 7,2 kg
Pallet Dimensions	: Truck - 110x130x235 cm Lorry - 110x130x190 cm
Quantity Per Pallet	: Truck - 50.000 pieces Lorry - 40.000 pieces

Technical Information

- Pull up seal with metallic insert to prevent tampering.
- Material Polypropylene Copolymer.
- Applicable for cages, big bags, chemical containers, silos, and tanker valves.
- It offers maximum security against tampering and ensures traceability of valuable goods.
- Applicable for the food, chemical, logistics and land transport sectors.
- Thermal and/or laser marking options.
- Products should be stored in their own packaging, in the room temperature and away from sunlight.
- Production is made with raw material complying with ROHS requirements.

Packaging Details

Product Weight	: 5,0 gr
Box Dimension	: 25 X 34 X 44 cm
Quantity Per Box	: 1000 pieces
Box Weight	: 5,5 kg
Pallet Dimensions	: Truck - 110x130x235 cm Lorry - 110x130x190 cm
Quantity Per Pallet	: Truck - 80.000 pieces Lorry - 64.000 pieces

SP Seal 24.02

Metallic Inserted Pull Up Seal



Color Options



Technical Information

- Pull up seal with plastic insert to prevent tampering.
- Material Polypropylene Copolymer.
- Tear off feature for easy hand removal.
- Applicable for cages, big bags, chemical containers, silos, and tanker valves.
- It offers maximum security against tampering and ensures traceability of valuable goods.
- Applicable for the food, chemical, logistics and land transport sectors.
- Thermal and/or laser marking options.
- Products should be stored in their own packaging, in the room temperature and away from sunlight.
- Production is made with raw material complying with ROHS requirements.

Packaging Details

Product Weight	: 1,6 gr
Box Dimension	: 23 X 28 X 33 cm
Quantity Per Box	: 1000 pieces
Box Weight	: 2 kg
Pallet Dimensions	: Truck - 110x130x215 cm Lorry - 110x130x180 cm
Quantity Per Pallet	: Truck - 120.000 pieces Lorry - 100.000 pieces

SP 01

Plastic Inserted Seal



Color Options



SP 24.01.LH

Metal Inserted Pull Up Seal



Color Options



Technical Information

- Pull up seal with metallic insert to prevent tampering.
- Material Polypropylene Copolymer.
- Label holder is available.
- Applicable for cages, big bags, chemical containers, silos, and tanker valves.
- It offers maximum security against tampering and ensures traceability of valuable goods.
- Applicable for the food, chemical, logistics and land transport sectors.
- Thermal and/or laser marking options.
- Products should be stored in their own packaging, in the room temperature and away from sunlight.
- Production is made with raw material complying with ROHS requirements.

Packaging Details

Product Weight	: 6,5 gr
Box Dimension	: 46 X 52 X 23 cm
Quantity Per Box	: 1000 pieces
Box Weight	: 7 kg
Pallet Dimensions	: Truck - 110x130x245 cm Lorry - 110x130x180 cm
Quantity Per Pallet	: Truck - 60.000 pieces Lorry - 54.000 pieces

SP 17.01

Plastic Indicative Seal



Color Options



Technical Information

- Single piece pull up seal.
- Material Polypropylene Copolymer.
- Tear off feature for easy hand removal.
- Applicable for cages, big bags, chemical containers, silos, and tanker valves. Also for postal and money bags.
- It offers security against tampering and ensures traceability of goods.
- Applicable for the food, chemical, logistics and land transport sectors.
- Thermal and/or laser marking options.
- Products should be stored in their own packaging, in the room temperature and away from sunlight.
- Production is made with raw material complying with ROHS requirements.

Packaging Details

Product Weight	: 5,5 gr
Box Dimension	: 27 X 46 X 55 cm
Quantity Per Box	: 1000 pieces
Box Weight	: 6,3 kg
Pallet Dimensions	: Truck - 110x130x235 cm Lorry - 110x130x180 cm
Quantity Per Pallet	: Truck - 48.000 pieces Lorry - 36.000 pieces

Technical Information

- Single piece pull up seal.
- Material Polypropylene Copolymer.
- Tear off feature for easy hand removal.
- Applicable for cages, big bags, chemical containers, silos, and tanker valves. Also for postal and money bags.
- It offers security against tampering and ensures traceability of goods.
- Applicable for the food, chemical, logistics and land transport sectors.
- Thermal and/or laser marking options.
- Products should be stored in their own packaging, in the room temperature and away from sunlight.
- Production is made with raw material complying with ROHS requirements.

Packaging Details

Product Weight	: 4,5 gr
Box Dimension	: 27 X 46 X 55 cm
Quantity Per Box	: 1000 pieces
Box Weight	: 5,3 kg
Pallet Dimensions	: Truck - 110x130x235 cm Lorry - 110x130x180 cm
Quantity Per Pallet	: Truck - 48.000 pieces Lorry - 36.000 pieces



Color Options



Technical Information

- Patented rotary lock seal ideal for sealing holes with small diameters such as meters (water, gas, electricity, petrol), taximeters, etc.
- The seal consists of two pieces of plastic through which the wire is threaded manually.
- It does not require a special tool for sealing or opening.
- Different types of wires available: plastic coated, seven or stranded wire
- Applicable as a substitute for lead seal.
- Polycarbonate and ABS material options for different applications.
- Products should be stored in their own packaging, in the room temperature and away from sunlight.
- Production is made with raw material complying with ROHS requirements.

Packaging Details

Product Weight	: 4,7 gr
Box Dimension	: 24 X 31 X 44 cm
Quantity Per Box	: 1000 pieces
Box Weight	: 5,2 kg
Pallet Dimensions	: Truck - 110x130x235 cm Lorry - 110x130x190 cm
Quantity Per Pallet	: Truck - 90.000 pieces Lorry - 72.000 pieces



Color Options



SP 17.02

Plastic Indicative Seal



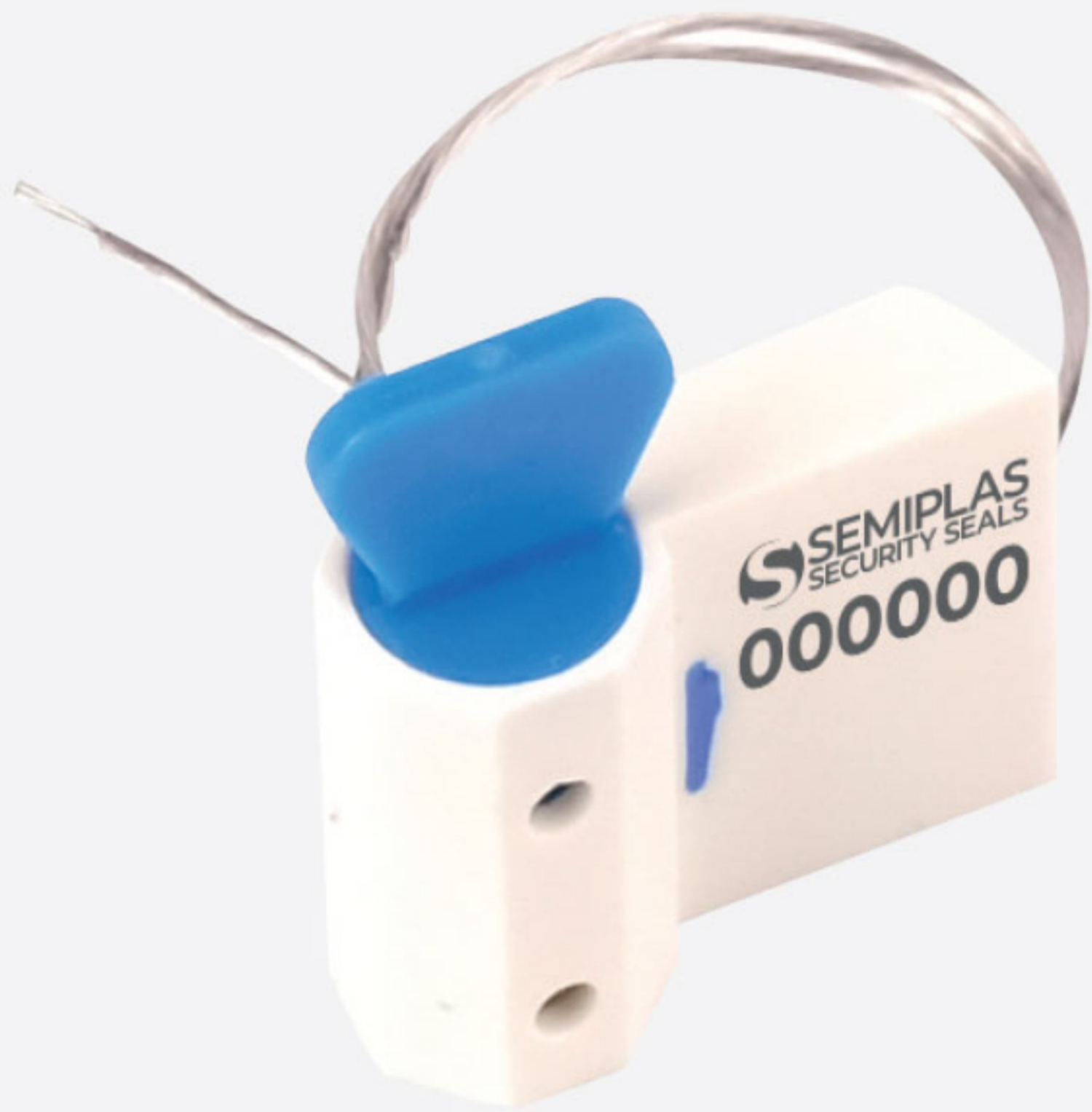
SP 07.LF

Twist Type Meter Seal



SP 07

Box Seal



Color Options



Technical Information

- Patented rotary lock seal ideal for sealing holes with small diameters such as meters (water, gas, electricity, petrol), taximeters, etc.
- The seal consists of two pieces of plastic through which the wire is threaded manually.
- It does not require a special tool for sealing or opening.
- Different types of wires available: plastic coated, seven or stranded wire
- Applicable as a substitute for lead seal.
- Polycarbonate and ABS material options for different applications.
- Products should be stored in their own packaging, in the room temperature and away from sunlight.
- Production is made with raw material complying with ROHS requirements.

Packaging Details

Product Weight	: 3,8 gr
Box Dimension	: 24 X 31 X 44 cm
Quantity Per Box	: 1000 pieces
Box Weight	: 4,3 kg
Pallet Dimensions	: Truck - 110x130x235 cm Lorry - 110x130x190 cm
Quantity Per Pallet	: Truck - 90.000 pieces Lorry - 72.000 pieces

SP 02

Plastic Indicative Seal



Color Options



Technical Information

- Single piece pull up seal.
- Material Polypropylene Copolymer.
- Applicable for cages, big bags, chemical containers, silos, and tanker valves.
- It offers security against tampering and ensures traceability of goods.
- Applicable for the food, chemical, logistics and land transport sectors.
- Thermal and/or laser marking options.
- Products should be stored in their own packaging", in the room temperature and away from sunlight.
- Production is made with raw material complying with ROHS requirements.

Packaging Details

Product Weight	: 2,0 gr
Box Dimension	: 23 X 28 X 33 cm
Quantity Per Box	: 1000 pieces
Box Weight	: 2,5 kg
Pallet Dimensions	: Truck - 110x130x215 cm Lorry - 110x130x180 cm
Quantity Per Pallet	: Truck - 120.000 pieces Lorry - 100.000 pieces

Technical Information

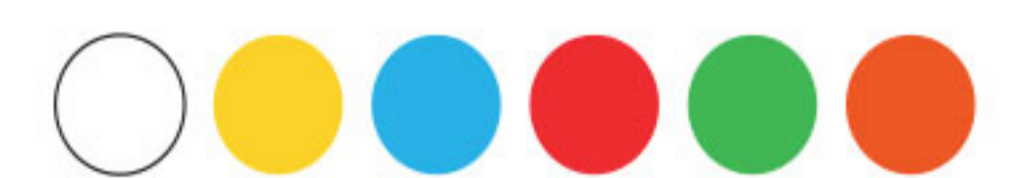
- Plastic Inserted pull up seal.
- Material Polypropylene Copolymer.
- Applicable for cages, big bags, chemical containers, silos, and tanker valves.
- It offers extra security against tampering and ensures traceability of goods.
- Applicable for the food, chemical, logistics and land transport sectors.
- Thermal and/or laser marking options.
- Products should be stored in their own packaging, in the room temperature and away from sunlight.
- Production is made with raw material complying with ROHS requirements.

Packaging Details

Product Weight	: 5,6 gr
Box Dimension	: 36 X 48 X 34 cm
Quantity Per Box	: 1000 pieces
Box Weight	: 6,4 kg
Pallet Dimensions	: Truck - 110x130x220 cm Lorry - 110x130x185 cm
Quantity Per Pallet	: Truck - 60.000 pieces Lorry - 50.000 pieces



Color Options



Technical Information

- Single piece Indicative pull up seal.
- Material Polypropylene Copolymer.
- Tear off feature for easy hand removal.
- Applicable for cages, big bags, chemical containers, silos, and tanker valves. Also for postal and money bags.
- It offers security against tampering and ensures traceability of goods.
- Applicable for the food, chemical, logistics and land transport sectors.
- Different marking options: Thermal, digital thermal and/or laser printing.
- Products should be stored in their own packaging, in the room temperature and away from sunlight.
- Production is made with raw material complying with ROHS requirements.

Packaging Details

Product Weight	: 8,4 gr
Box Dimension	: 50 X 50 X 30 cm
Quantity Per Box	: 1000 pieces
Box Weight	: 9,2 kg
Pallet Dimensions	: Truck - 110x130x225 cm Lorry - 110x130x195 cm
Quantity Per Pallet	: Truck - 36.000 pieces Lorry - 30.000 pieces



Color Options



SP 05.01

Fixed Length Seal



Color Options



Technical Information

- Single piece fixed length seal.
- Material Polypropylene Copolymer
- Applicable for cages, plastic boxes and truck doors.
- It offers security against tampering and ensures traceability of goods.
- Applicable for the food, chemical, logistics and land transport sectors.
- Thermal and/or laser marking options.
- Products should be stored in their own packaging, in the room temperature and away from sunlight.
- Production is made with raw material complying with ROHS requirements.

Packaging Details

Product Weight	: 3,6 gr
Box Dimension	: 24 X 31 X 44 cm
Quantity Per Box	: 1000 pieces
Box Weight	: 4,1 kg
Pallet Dimensions	: Truck - 110x130x235 cm Lorry - 110x130x190 cm
Quantity Per Pallet	: Truck - 90.000 pieces Lorry - 72.000 pieces

SP 05.02

Fixed Length Seal



Color Options



Technical Information

- Single piece fixed length seal.
- Material Polypropylene Copolymer
- Applicable for cages, plastic boxes and truck doors.
- It offers security against tampering and ensures traceability of goods.
- Applicable for the food, chemical, logistics and land transport sectors.
- Thermal and/or laser marking options.
- Products should be stored in their own packaging, in the room temperature and away from sunlight.
- Production is made with raw material complying with ROHS requirements.

Packaging Details

Product Weight	: 2,7 gr
Box Dimension	: 23 X 28 X 33 cm
Quantity Per Box	: 1000 pieces
Box Weight	: 3,1 kg
Pallet Dimensions	: Truck - 110x130x215 cm Lorry - 110x130x180 cm
Quantity Per Pallet	: Truck - 120.000 pieces Lorry - 100.000 pieces

Technical Information

- Single piece pull up seal.
- Material Polypropylene Copolymer.
- Tear off feature for easy hand removal.
- Applicable for cages, plastic boxes and truck doors.
- It offers security against tampering and ensures traceability of goods.
- Applicable for the food, chemical, logistics and land transport sectors.
- Thermal and/or laser marking options.
- Products should be stored in their own packaging, in the room temperature and away from sunlight.
- Production is made with raw material complying with ROHS requirements.

Packaging Details

Product Weight	: 1,3 gr
Box Dimension	: 23 X 28 X 33 cm
Quantity Per Box	: 1000 pieces
Box Weight	: 1,8 kg
Pallet Dimensions	: Truck - 110x130x215 cm Lorry - 110x130x180 cm
Quantity Per Pallet	: Truck - 120.000 pieces Lorry -100.000 pieces

SP 03

Plastic Indicative Seal



Color Options



Technical Information

- Single piece plastic anchor seal.
- Material Polycarbonate
- Applicable for cages, plastic boxes, water, gas and electricity meters.
- It offers security against tampering.
- Numbering, logo is available by laser marking.
- Products should be stored in their own packaging, in the room temperature and away from sunlight.
- Production is made with raw material complying with ROHS requirements.

Packaging Details

Product Weight	: 1,5 gr
Box Dimension	: 23 X 28 X 33 cm
Quantity Per Box	: 1000 pieces
Box Weight	: 2,0 kg
Pallet Dimensions	: Truck - 110x130x215 cm Lorry - 110x130x180 cm
Quantity Per Pallet	: Truck - 120.000 pieces Lorry -100.000 pieces

SP AS.01

Plastic Anchor Seal



Color Options



SP 07.LE

Twist Type Meter Seal



Color Options



Technical Information

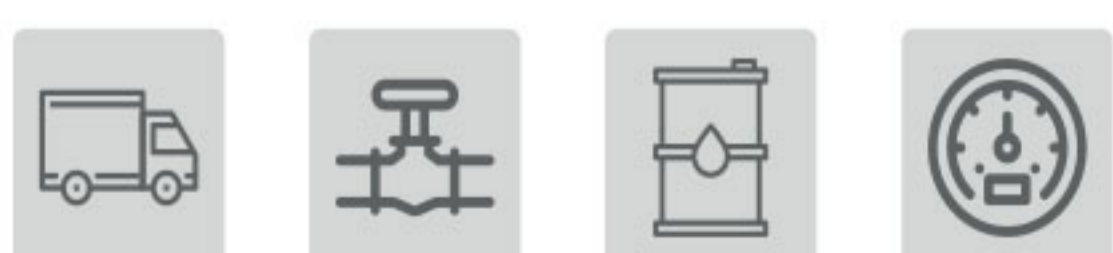
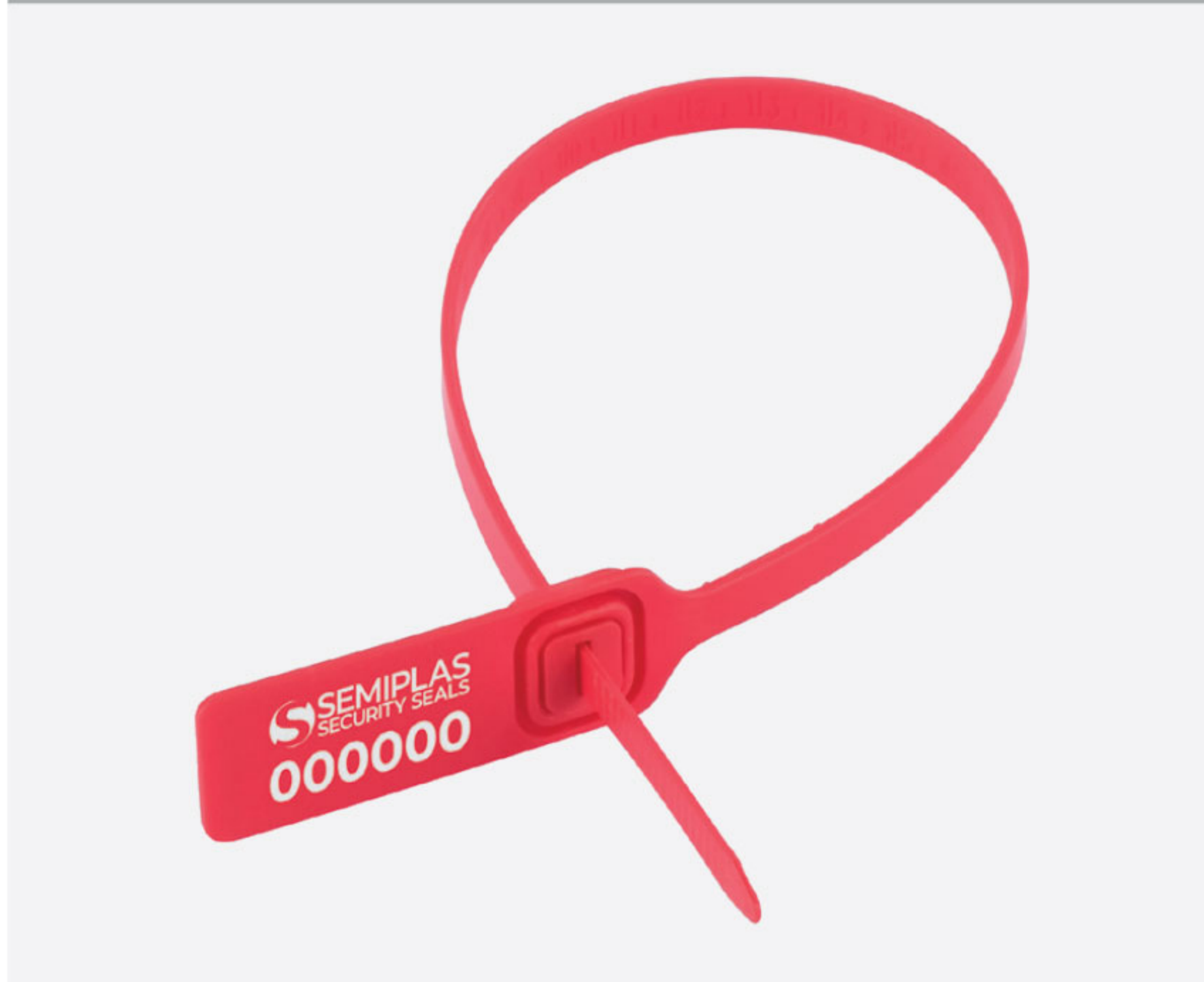
- Patented rotary lock seal ideal for sealing holes with small diameters such as meters (water, gas, electricity), taximeters, etc.
- The seal consists of three pieces of plastic through which the wire is threaded manually.
- It does not require a special tool for sealing or opening.
- Different types of wires available: plastic coated, seven or two stranded wire.
- Applicable as a substitute for lead seal.
- Polycarbonate and ABS material options for different applications.
- Products should be stored in their own packaging, in the room temperature and away from sunlight.
- Production is made with raw material complying with ROHS requirements.

Packaging Details

Product Weight	: 5,1 gr
Box Dimension	: 24 X 31 X 44 cm
Quantity Per Box	: 1000 pieces
Box Weight	: 5,7 kg
Pallet Dimensions	: Truck - 110x130x235 cm Lorry - 110x130x190 cm
Quantity Per Pallet	: Truck - 90.000 pieces Lorry - 72.000 pieces

SP 24 POSTE

Metallic Inserted Seal



Color Options



Technical Information

- Pull up seal with metallic insert to prevent tampering.
- Material Polypropylene Copolymer.
- Applicable for cages, big bags, chemical containers, silos, and tanker valves. Also for postal and money bags.
- It offers maximum security against tampering and ensures traceability of valuable goods.
- Applicable for the food, chemical, logistics and land transport sectors.
- Thermal and/or laser marking options.
- Products should be stored in their own packaging, in the room temperature and away from sunlight.
- Production is made with raw material complying with ROHS requirements.

Packaging Details

Product Weight	: 5,6 gr
Box Dimension	: 29 X 50 X 19 cm
Quantity Per Box	: 1000 pieces
Box Weight	: 6,0 kg
Pallet Dimensions	: Truck - 80x120x225 cm Lorry - 80x120x185 cm
Quantity Per Pallet	: Truck - 60.000 pieces Lorry - 54.000 pieces

Technical Information

- Pull up seal with metallic insert to prevent tampering.
- Material Polypropylene Copolymer.
- Applicable for cages, big bags, chemical containers, silos, and tanker valves.
- It offers maximum security against tampering and ensures traceability of valuable goods.
- Applicable for the food, chemical, logistics and land transport sectors.
- Thermal and/or laser marking options.
- Products should be stored in their own packaging, in the room temperature and away from sunlight.
- Production is made with raw material complying with ROHS requirements.

Packaging Details

Product Weight	: -
Box Dimension	: 23 X 28 X 33 cm
Quantity Per Box	: 1000 pieces
Box Weight	: -
Pallet Dimensions	: Truck - 110x130x235 cm Lorry - 110x130x190 cm
Quantity Per Pallet	: Truck - 120.000 pieces Lorry - 100.000 pieces



Color Options



SP 23X.01

Metallic Inserted Seal



Technical Information

- Pull up seal with metallic insert to prevent tampering.
- Material Polypropylene Copolymer.
- Applicable for cages, big bags, chemical containers, silos, and tanker valves.
- It offers maximum security against tampering and ensures traceability of valuable goods.
- Applicable for the food, chemical, logistics and land transport sectors.
- Thermal and/or laser marking options.
- Products should be stored in their own packaging, in the room temperature and away from sunlight.
- Production is made with raw material complying with ROHS requirements.

Packaging Details

Product Weight	: -
Box Dimension	: 24 X 31 X 44 cm
Quantity Per Box	: 1000 pieces
Box Weight	: -
Pallet Dimensions	: Truck - 110x130x235 cm Lorry - 110x130x190 cm
Quantity Per Pallet	: Truck - 90.000 pieces Lorry - 72.000 pieces



Color Options



SP 23X.02

Metallic Inserted Seal



SP AS.02

Plastic Anchor Seal



Color Options



Technical Information

- Two piece plastic anchor seal.
- Material Polycarbonate
- Applicable for cages, plastic boxes, water, gas and electricity meters.
- It offers security against tampering.
- Numbering, logo is available by laser marking.
- Products should be stored in their own packaging, in the room temperature and away from sunlight.
- Production is made with raw material complying with ROHS requirements.

Packaging Details

Product Weight	: -
Box Dimension	: 23 X 28 X 33 cm
Quantity Per Box	: 1000 pieces
Box Weight	: -
Pallet Dimensions	: Truck - 110x130x215 cm Lorry - 110x130x180 cm
Quantity Per Pallet	: Truck - 120.000 pieces Lorry - 100.000 pieces

SP 26/15

Anti-Lock Safe



Color Options



Technical Information

- Tamper-proof clamps are used to show evidence of and prevent possible tampering in water or gas meters.
- It is made of opaque or transparent polycarbonate and available in various colors.
- Easy to seal. No tool required.
- Self-fastening for easy handling and adaptable to different sizes of pipes.
- Can be customized.
- Products should be stored in their own packaging, in the room temperature and away from sunlight.
- Production is made with raw material complying with ROHS requirements.

Packaging Details

Product Weight	: 19,6 gr
Box Dimension	: 25 X 34 X 44 cm
Quantity Per Box	: 500 pieces
Box Weight	: 10,0 kg
Pallet Dimensions	: Truck - 110x130x235 cm Lorry - 110x130x190 cm
Quantity Per Pallet	: Truck - 40.000 pieces Lorry - 32.000 pieces

Technical Information

- Tamper-proof clamps are used to show evidence of and prevent possible tampering in water or gas meters.
- It is made of opaque or transparent polycarbonate and available in various colors.
- Easy to seal. No tool required.
- Self-fastening for easy handling and adaptable to different sizes of pipes.
- Can be customized.
- Products should be stored in their own packaging, in the room temperature and away from sunlight.
- Production is made with raw material complying with ROHS requirements.

Packaging Details

Product Weight	: 20,2 gr
Box Dimension	: 25 X 34 X 44 cm
Quantity Per Box	: 500 pieces
Box Weight	: 10,5 kg
Pallet Dimensions	: Truck - 110x130x235 cm Lorry - 110x130x190 cm
Quantity Per Pallet	: Truck - 40.000 pieces Lorry - 32.000 pieces

SP 26/20

Anti-Lock Safe



Color Options



Technical Information

- Tamper-proof clamps are used to show evidence of and prevent possible tampering in water or gas meters.
- It is made of opaque or transparent polycarbonate and available in various colors.
- Easy to seal. No tool required.
- Self-fastening for easy handling and adaptable to different sizes of pipes.
- Can be customized.
- Products should be stored in their own packaging, in the room temperature and away from sunlight.
- Production is made with raw material complying with ROHS requirements.

Packaging Details

Product Weight	: 20,6 gr
Box Dimension	: 25 X 34 X 44 cm
Quantity Per Box	: 500 pieces
Box Weight	: 11,0 kg
Pallet Dimensions	: Truck - 110x130x235 cm Lorry - 110x130x190 cm
Quantity Per Pallet	: Truck - 40.000 pieces Lorry - 32.000 pieces

SP 26/25

Anti-Lock Safe



Color Options

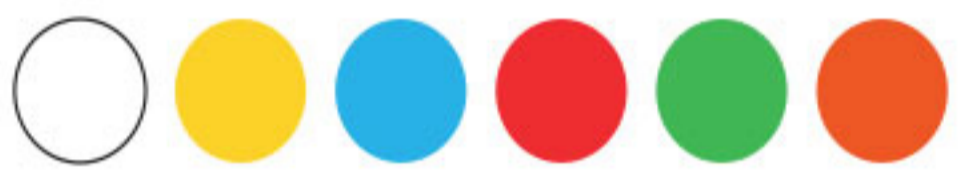


SP 26/25-2

Anti-Lock Safe



Color Options



Technical Information

- Tamper-proof clamps are used to show evidence of and prevent possible tampering in water or gas meters.
- It is made of opaque or transparent polycarbonate and available in various colors.
- Easy to seal. No tool required.
- Self-fastening for easy handling and adaptable to different sizes of pipes.
- Can be customized.
- Products should be stored in their own packaging, in the room temperature and away from sunlight.
- Production is made with raw material complying with ROHS requirements.

Packaging Details

Product Weight	: 20,8 gr
Box Dimension	: 25 X 34 X 44 cm
Quantity Per Box	: 500 pieces
Box Weight	: 11,2 kg
Pallet Dimensions	: Truck - 110x130x235 cm Lorry - 110x130x190 cm
Quantity Per Pallet	: Truck - 40.000 pieces Lorry - 32.000 pieces

SP26/40

Anti-Lock Safe



Color Options



Technical Information

- Tamper-proof clamps are used to show evidence of and prevent possible tampering in water or gas meters.
- It is made of opaque or transparent polycarbonate and available in various colors.
- Easy to seal. No tool required.
- Self-fastening for easy handling and adaptable to different sizes of pipes.
- Can be customized.
- Products should be stored in their own packaging, in the room temperature and away from sunlight.
- Production is made with raw material complying with ROHS requirements.

Packaging Details

Product Weight	: 20,8 gr
Box Dimension	: 25 X 34 X 44 cm
Quantity Per Box	: 500 pieces
Box Weight	: 11,2 kg
Pallet Dimensions	: Truck - 110x130x235 cm Lorry - 110x130x190 cm
Quantity Per Pallet	: Truck - 40.000 pieces Lorry - 32.000 pieces





www.semiplas.com